

# Wairau Hospital

ACE RMO WEBINAR 2026



# Wairau Hospital

- 65 Bed hospital
- Base hospital for the region servicing population of approximately 50,000 people
- Have a high dependency unit, no ICU
- Use Health Connect South system and paper notes/drug charts
- Radiology requests, referrals, obs charts are online
- Radiology gets reported relatively quickly



# Recruitment

- Mandatory cover letter
- Interviews are available throughout the year leading up to DHB advising of selection
- Consideration of ACE scoring, CV, references
- What we are looking for:
  - Team player
  - Proactive
  - Have an interest/connection to the area

# Positions Available

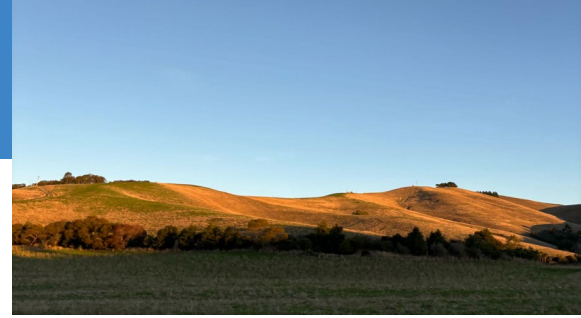
- 5 PGY1 positions available
- Runs available in PGY1:
  - General Medicine
  - AT&R and Ophthalmology
  - General Surgery/ENT
  - General Surgery/Urology
  - Orthopedics
  - Relief (4th Quarter normally)
- PGY2 runs :
  - All of the above AND community (Hospice/Urgent Care/GP), Emergency, O&G, Paediatrics, General Relief

# Working in Wairau

- Average day: 0800 - 1600
  - Smaller patient load compared to other hospitals
  - Mostly 1:1 consultant and RMO; reg roster is growing
- One long day per week: 0800 - 2200
  - Usually 1-2 RMOs for the wards each long day
- 3 weekends per quarter: 0800 - 2000
  - No long days rostered during 10-day stretch
- Admission shift - 1 week per quarter: 1430-2230
- Wednesday protected teaching (2x 45 minute sessions)
- METU weekly teaching on Thursdays
- O&G and Paeds Diploma
- Growing number of registrars

# Why Wairau?

- Great work-life balance
- Close working relationship with consultants
- Close-knit group - everyone helps out
- More opportunities to practice procedures and assisting in theatres
- Great way to become more independent and gain confidence with decision making
- Great RMO unit - do their best to accommodate your leave request
- Free coffee + smoothies
- You can wear scrubs everyday
- Very close to places - Sounds, Abel Tasman, Kaikoura, Nelson Lakes





# Questions

